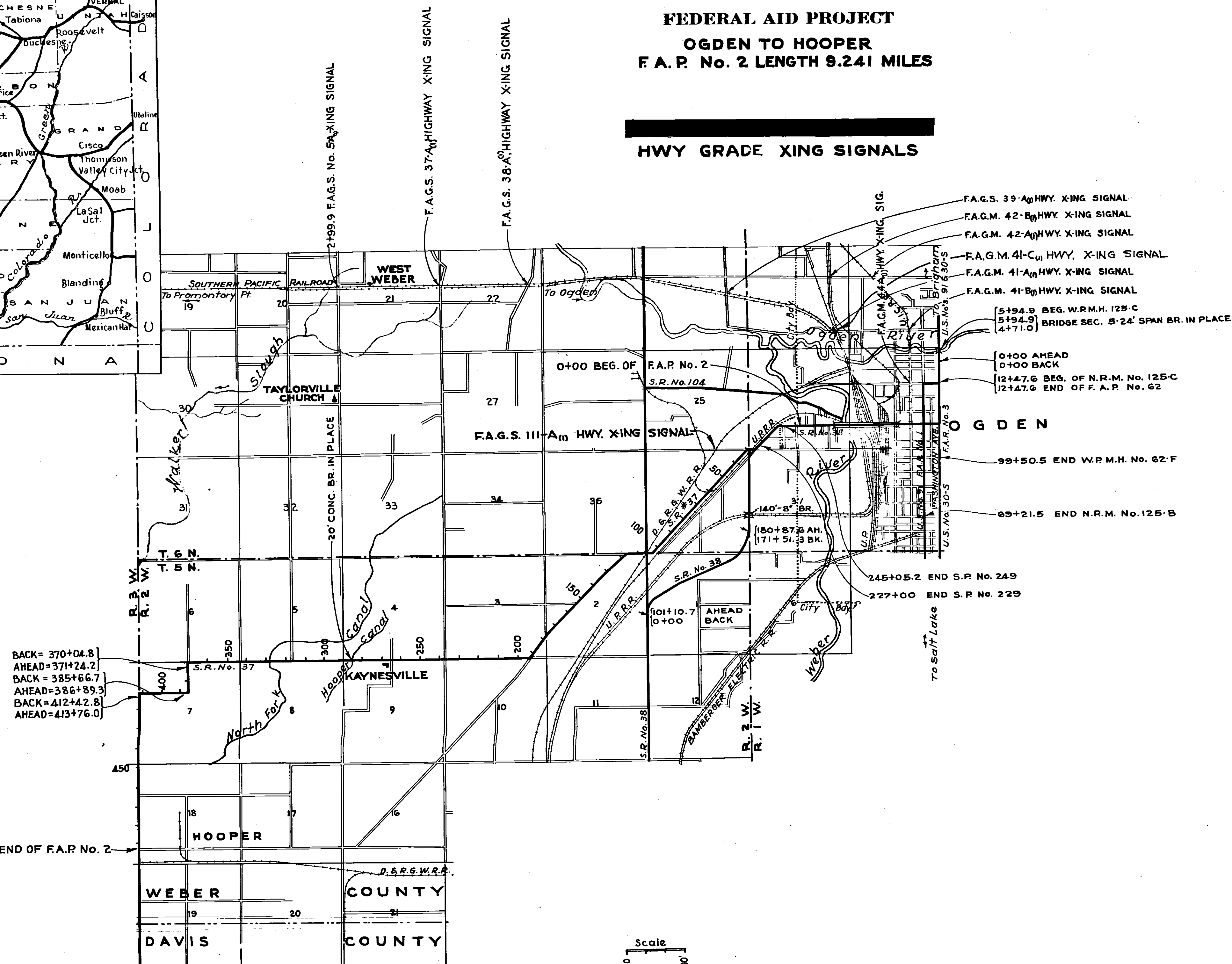


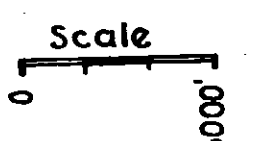
STATE OF UTAH STATE ROAD COMMISSION

PLANS OF PROPOSED STATE ROAD FEDERAL AID PROJECT OGDEN TO HOOPER F. A. P. No. 2 LENGTH 9.241 MILES

HWY GRADE XING SIGNALS



BACK = 370+04.8
AHEAD = 371+24.2
BACK = 385+66.7
AHEAD = 386+89.3
BACK = 412+42.8
AHEAD = 413+76.0



FED. ROAD DIST. NO.	STATE	FED. AID PROJ. NO.	FISCAL YEAR	SHEET NO.	TOTAL SHEETS
12	UTAH	2	1917	1	1
12	UTAH	F.A.G.S. 57	1938	1	4
12	UTAH	F.A.G.S. 37-A	1939	1	4
12	UTAH	F.A.G.S. 38-A	1939	1	4
12	UTAH	F.A.G.S. 39-A	1939	1	4
12	UTAH	F.A.G.M. 41-A	1939	1	4
12	UTAH	F.A.G.M. 42-A	1939	1	4
12	UTAH	F.A.G.M. 43-A	1939	1	4
12	UTAH				

INDEX TO SHEETS F.A. [REDACTED]

Sheet	Description	Drwg. No.
1	Title Sheet	
2	Situation Plan & Profile	
3	Signals & Equipment	
4	Wiring Diagram. (Pass.)	
	Wiring Diagram. (Frt.)	

INDEX TO SHEETS F.A.P. No. 2

SHEET NO.	DESCRIPTION	DRAWING NO.	STATION
1	Title Sheet		
2	Typical Section		
3-6	Plan and Profile		

APPROVED: JAN. 1937.
STATE ROAD COMMISSION OF UTAH
Charles Knaut
CHIEF ENGINEER

RECOMMENDED FOR APPROVAL

DISTRICT ENGINEER
PUBLIC ROADS ADMINISTRATION
FEDERAL AID WORKS AGENCY

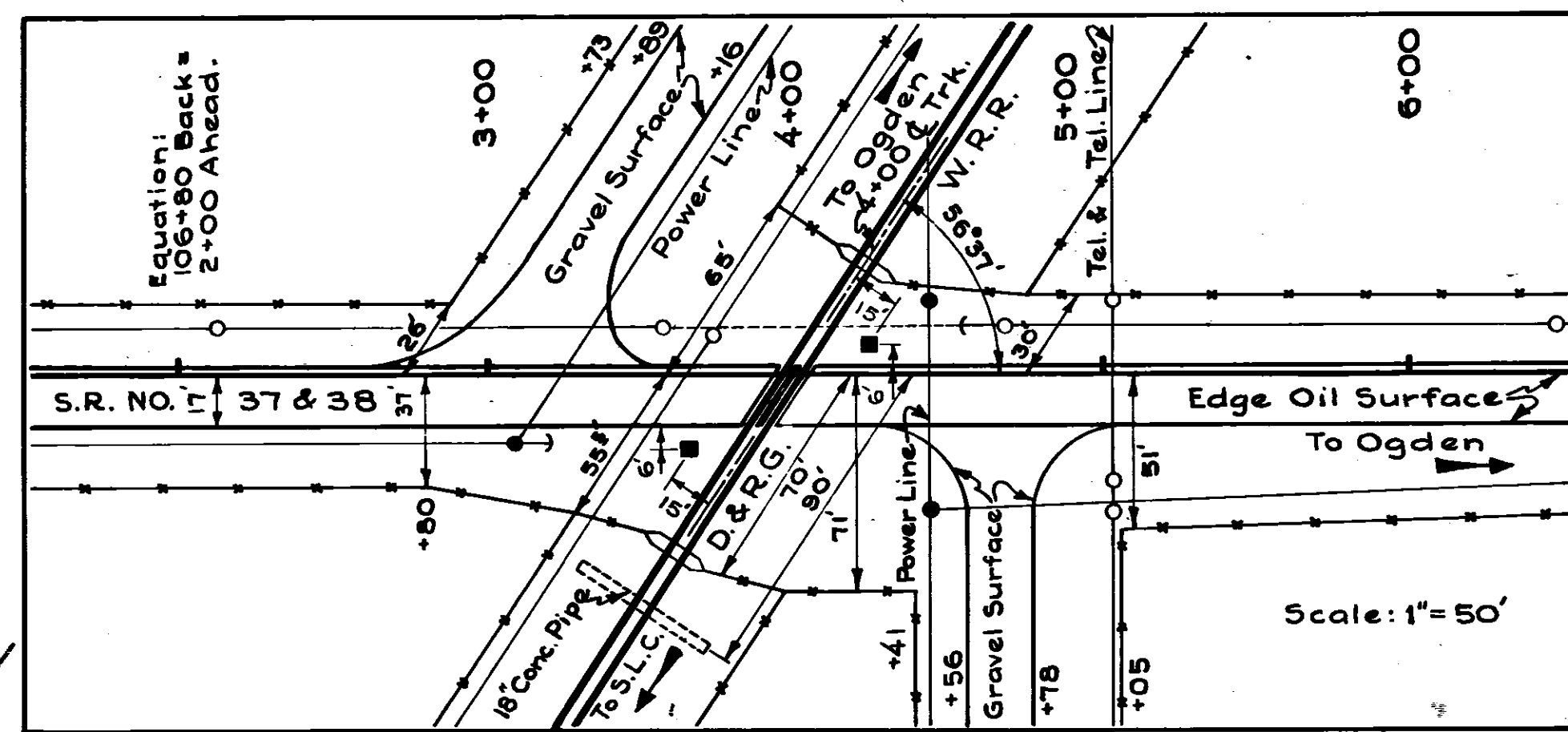
RECOMMENDED FOR APPROVAL

CHIEF, WESTERN DIVISION
PUBLIC ROADS ADMINISTRATION
FEDERAL AID WORKS AGENCY

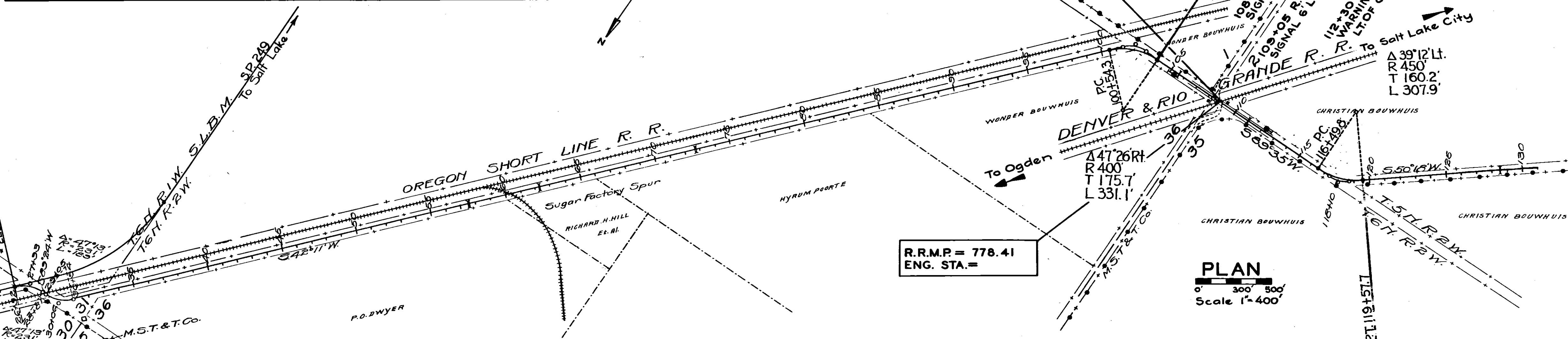
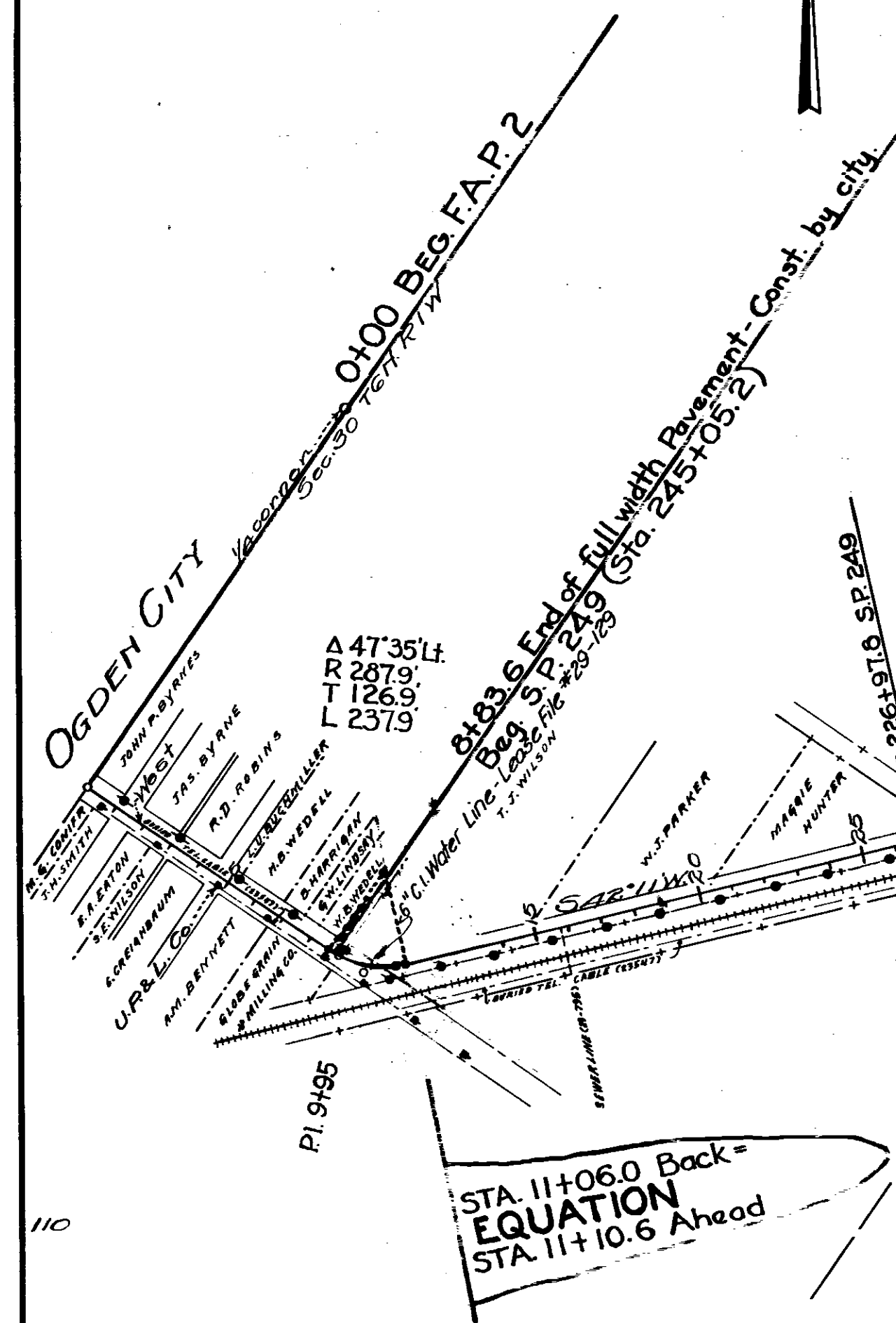
APPROVED

COMMISSIONER
PUBLIC ROADS ADMINISTRATION
FEDERAL AID WORKS AGENCY

FED. ROAD DIST. NO.	STATE	FED. AID PROJ. NO.	FISCAL YEAR	SHEET NO.	TOTAL SHEETS
2	UTAH	2	1917	3	6
2	UTAH	F.A.G.S. 200-D	1939	2	



F.A.G.S. 200-D(1)
X-ING SIGNALS



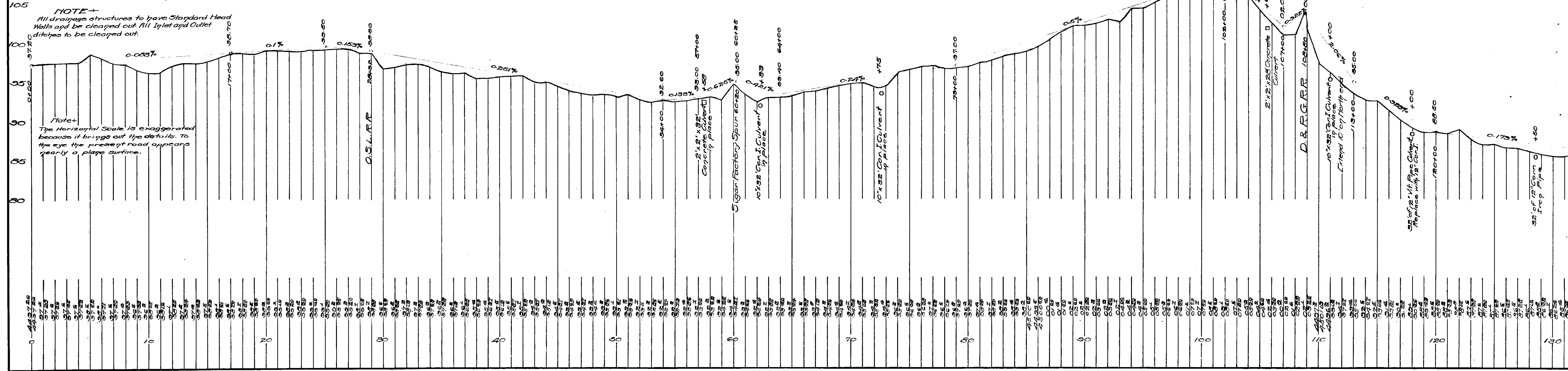
PLAN
Scale 1" = 400'

NOTE
Sta. 0+00 to 8+83.6 Paved full width by City.
Sta. 8+83.6 to 26+92 Reconstructed by State 1930-18 PC. Concrete Pavement as S.P. 249.
Sta. 26+92 to 492+00 Oil mix gravel surfaced 18' width-State 1930-Gravel surface by contract S.P. 234-oil by State forces.
Curves Sta 100±; 118±; 190±; 265±; & 383± flattened by State 1930.

LIST OF STRUCTURES

STA.	IN PLACE	REQUIRED	REMARKS	DRWG. NO.
108+47		R.R. Hwy X-ing Signal	Locate as Shown	
109+05		" " " "	" " "	
105+30		R.R. Advance Warrig Sign	" " "	
112+30		" " " "	" " "	

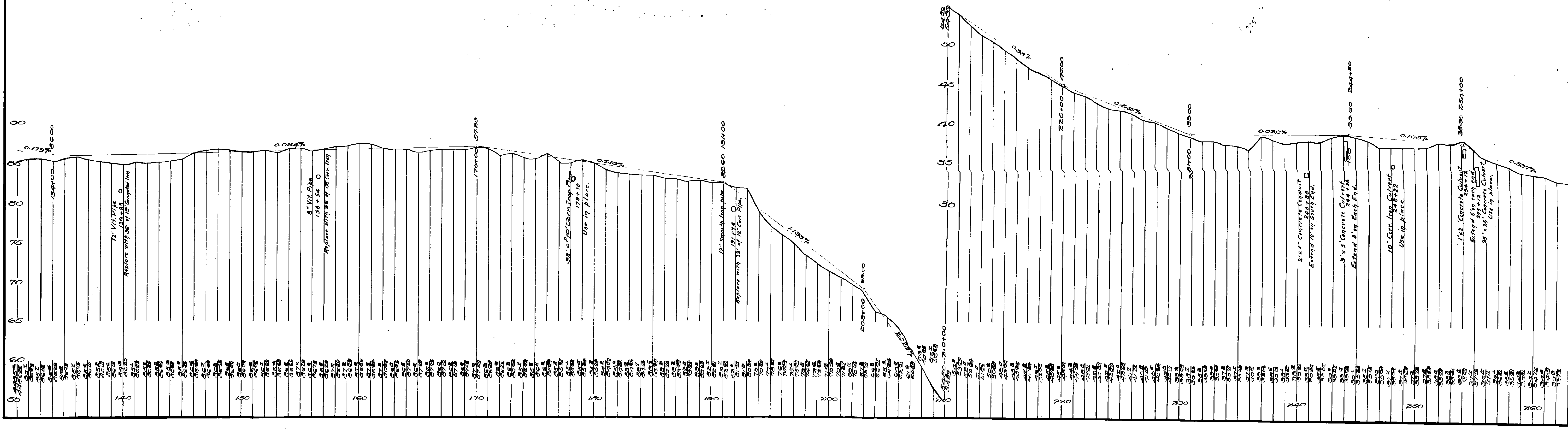
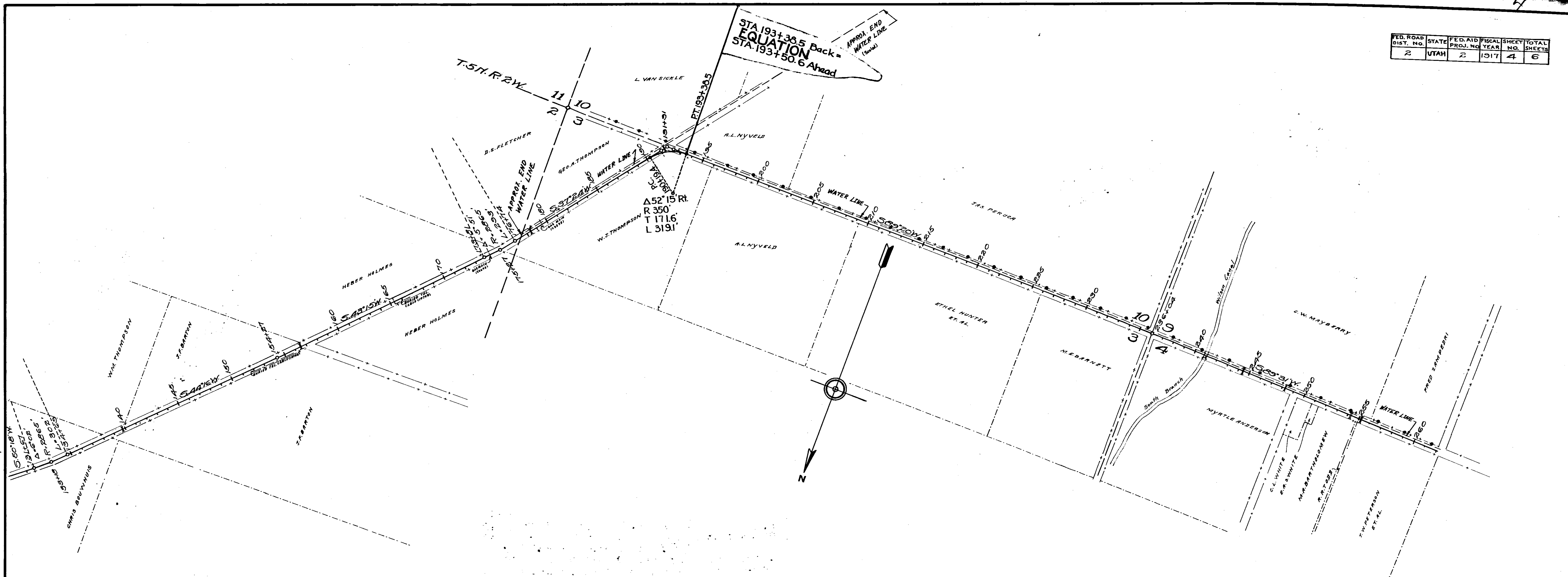
STA 119+57.7 Back = EQUATION
STA 119+63.2 Ahead



NOTE -
All drainage structures to have Standard Head Walls and be cleared out. All Inlet and Outlet ditches to be cleared out.

Note -
The Horizontal Scale is exaggerated because it brings out the details. To the eye the present road appears nearly a plane surface.

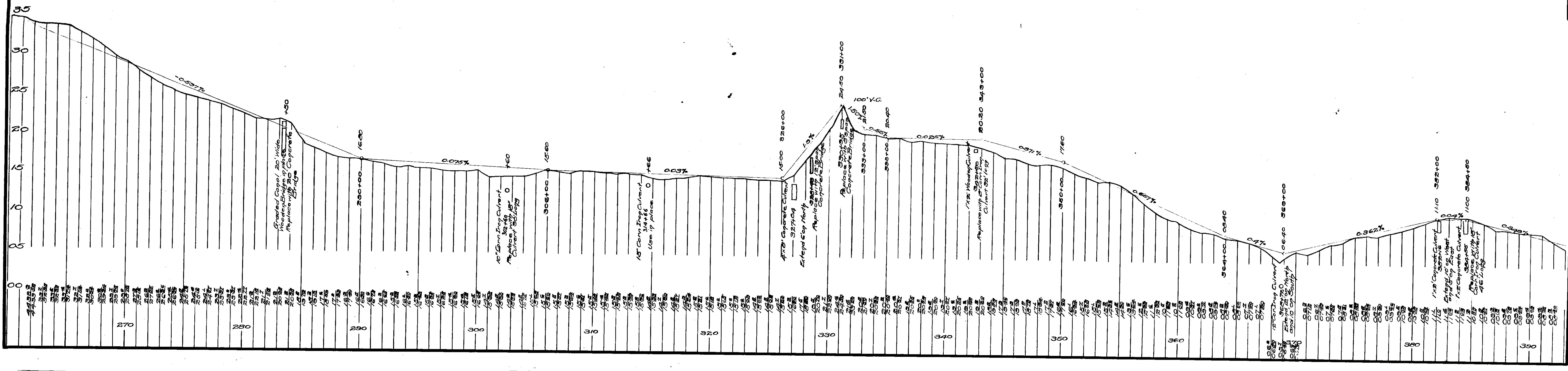
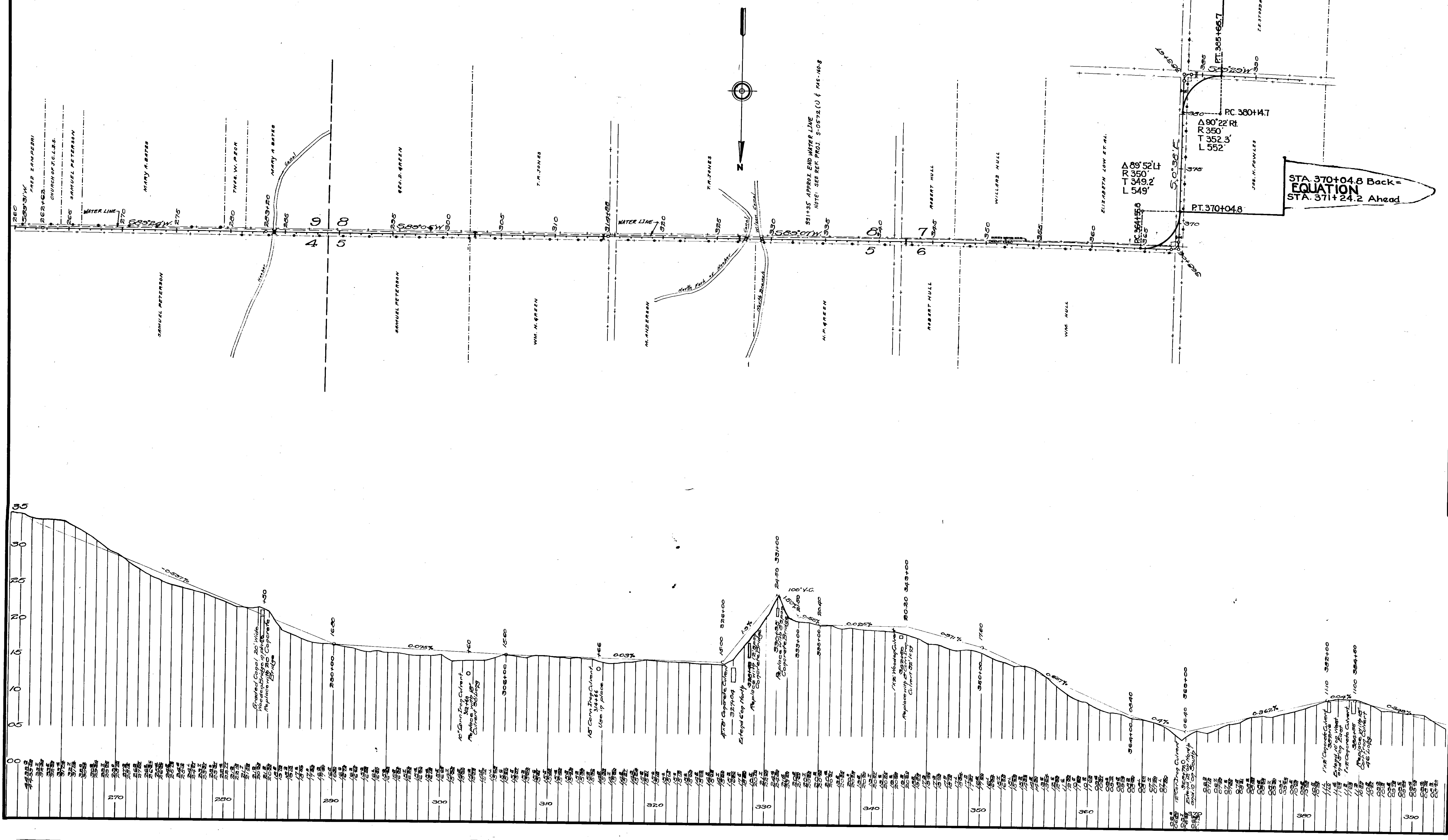
FED. ROAD DIST. NO.	STATE	FED. AID PROJ. NO.	FISCAL YEAR	SHEET NO.	TOTAL SHEETS
2	UTAH	2	1917	4	6



FED. ROAD DIST. NO.	STATE	FED. AID PROJ. NO.	FISCAL YEAR	SHEET NO.	TOTAL SHEETS
2	UTAH	2	1917	5	6

STA. 385+66.7 Back=
EQUATION
STA. 386+89.3 Ahead

STA. 370+04.8 Back=
EQUATION
STA. 371+24.2 Ahead

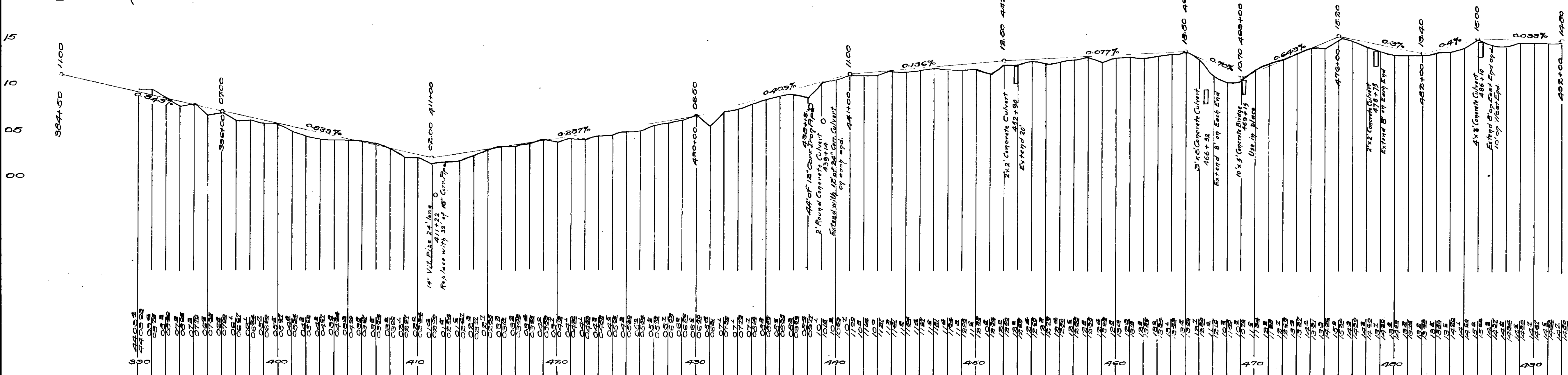


FED. ROAD DIST. NO.	STATE	FED. AID PROJ. NO.	FISCAL YEAR	SHEET NO.	TOTAL SHEETS
2	UTAH	2	1917	6	6

NOTE: WATER LINE CENTERS 2000 PAST NE CORNER OF SEC. 24. REF. PROJ. FAS 1608 & 5-0572 (1).

STA 492+00
END PROJECT
F.A.P. 2

STA 412+42.8 Back EQUATION
STA 415+76.0 Ahead



STATE OF UTAH

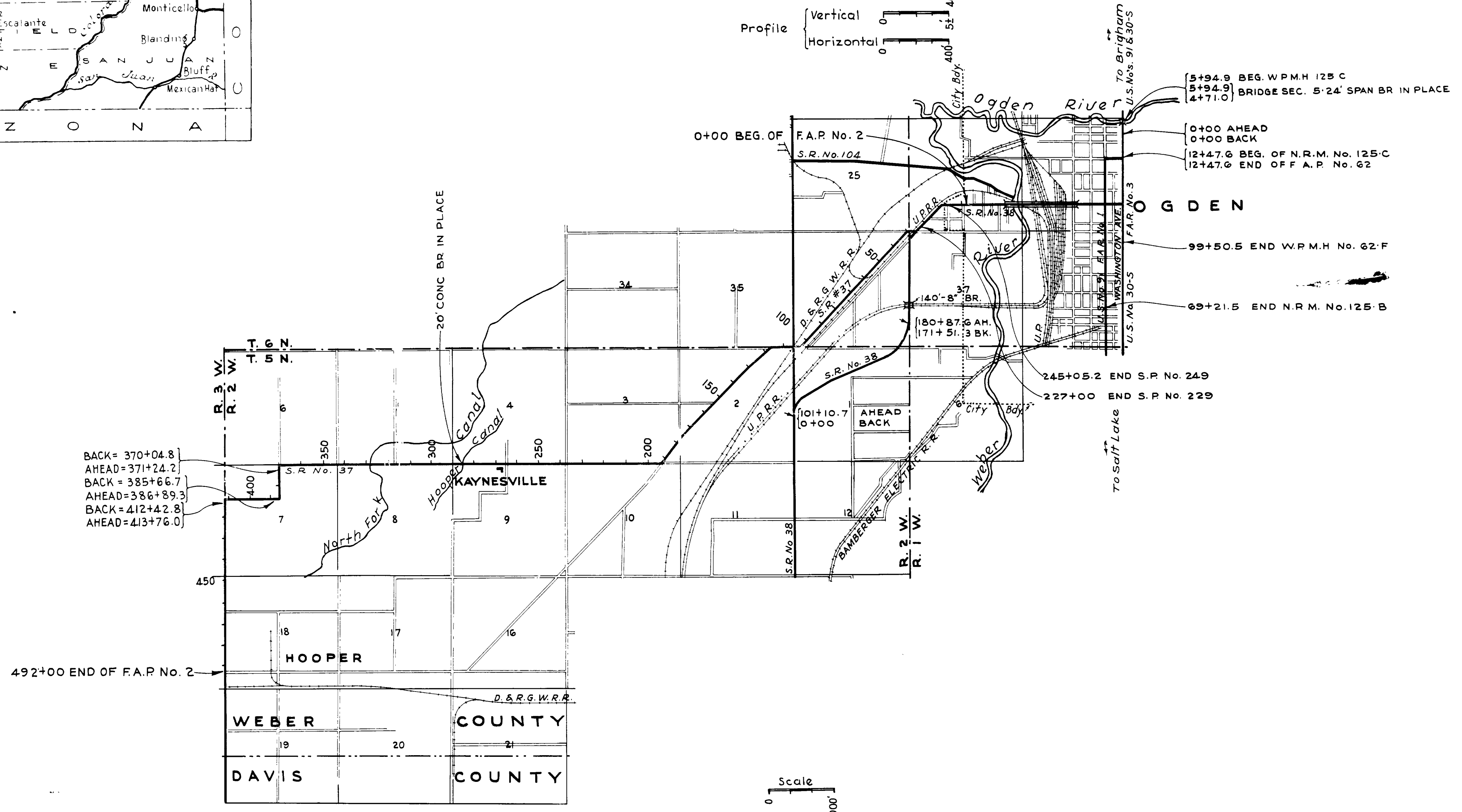
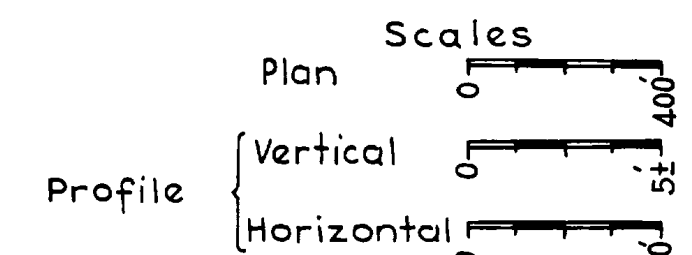
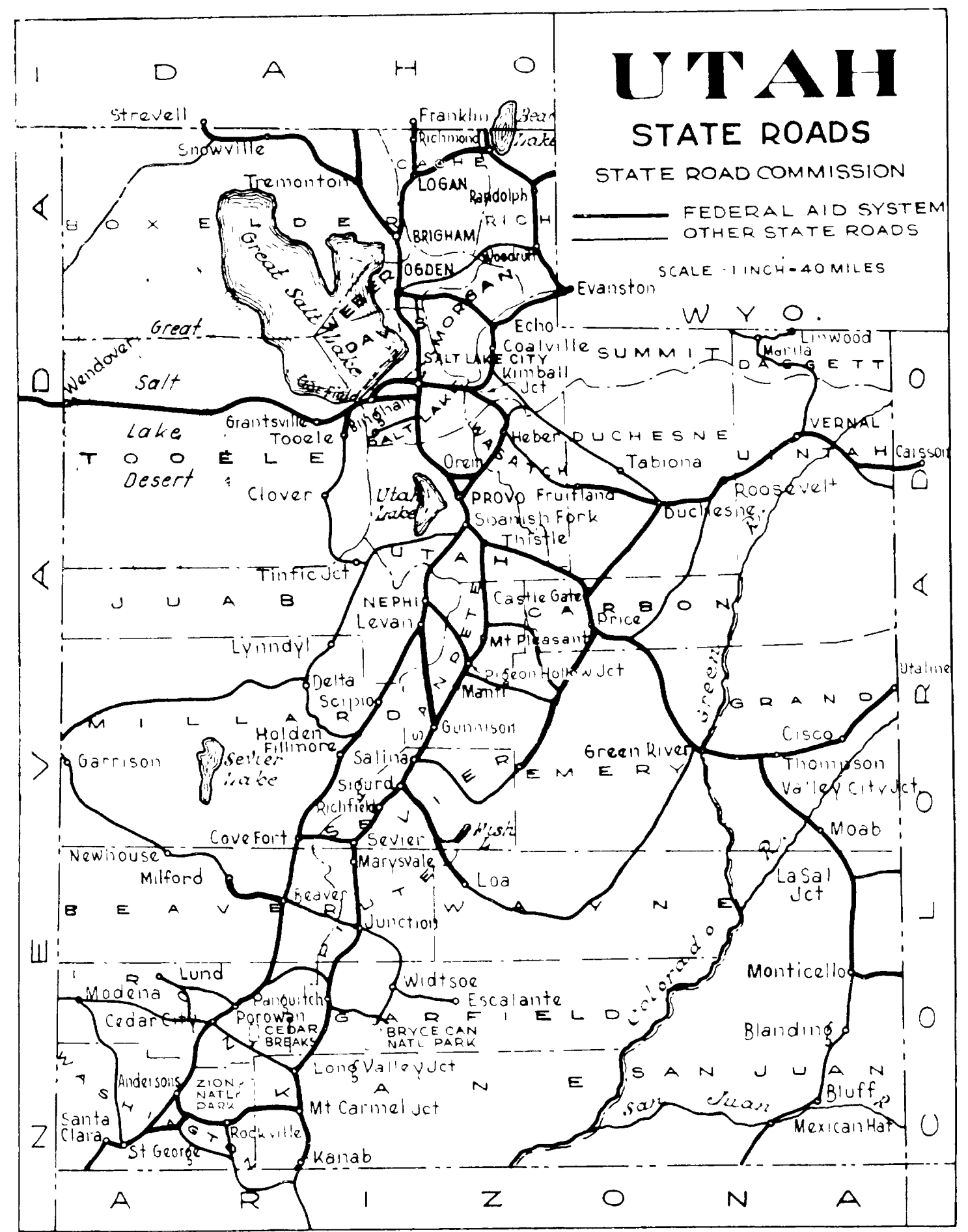
STATE ROAD COMMISSION

PLANS OF PROPOSED STATE ROAD

FEDERAL AID PROJECT

OGDEN TO HOOPER

F. A. P. No. 2 LENGTH 9.241 MILES



INDEX TO SHEETS F. A. P. No. 2

SHEET No.	DESCRIPTION	DRAWING No.	STATION
1	Title Sheet		
2	Typical Section		
3-6	Plan and Profile		

APPROVED JAN. 1937

STATE ROAD COMMISSION OF UTAH

Edw. E. Howe
CHAIRMAN

Brook Peterson
MEMBER

W. Hamilton
MEMBER

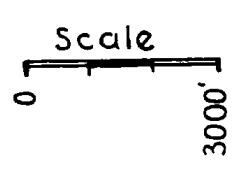
K. Sprague
CHIEF ENGINEER

RECOMMENDED FOR APPROVAL

RECOMMENDED FOR APPROVAL DISTRICT ENGINEER BUREAU OF PUBLIC ROADS

APPROVED CHIEF ENGINEER BUREAU PUBLIC ROADS

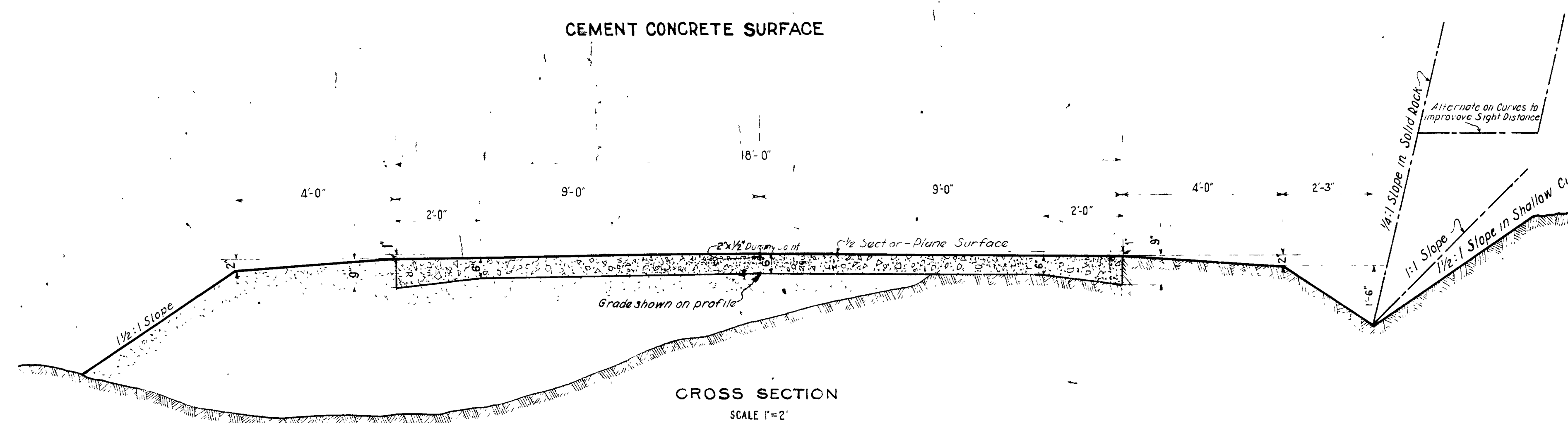
DIRECTOR BUREAU PUBLIC ROAD



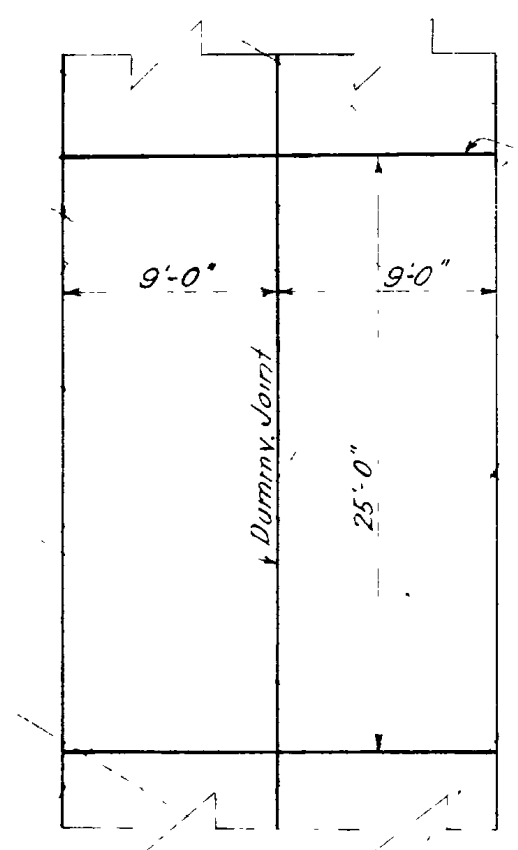
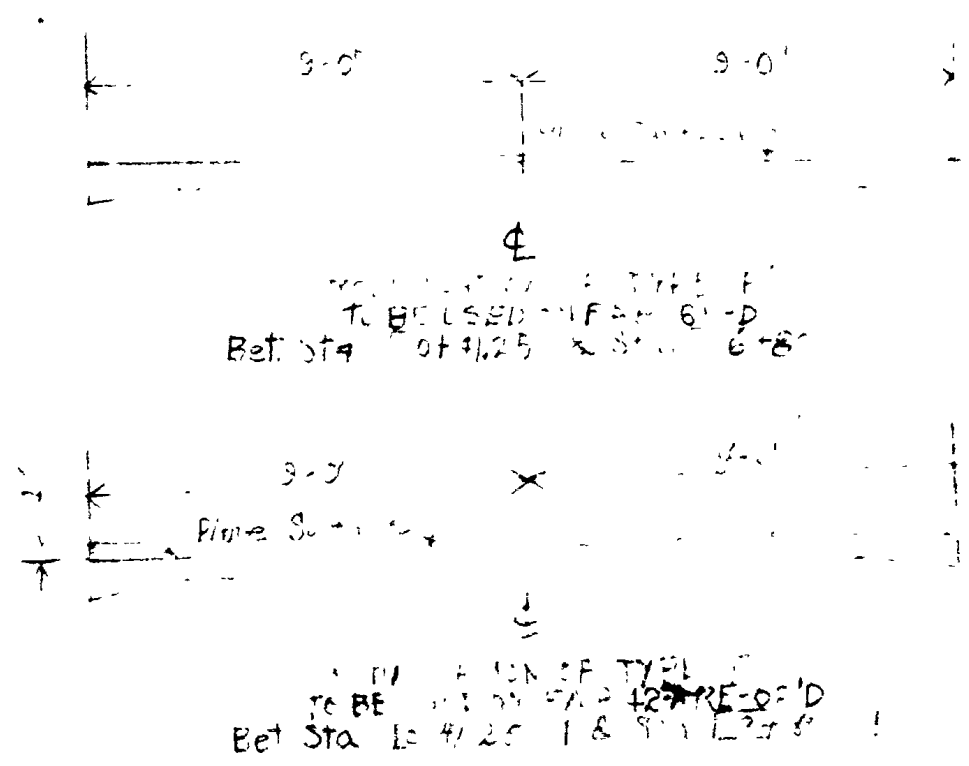
TYPICAL CROSS SECTION

TYPE "F"

CEMENT CONCRETE SURFACE

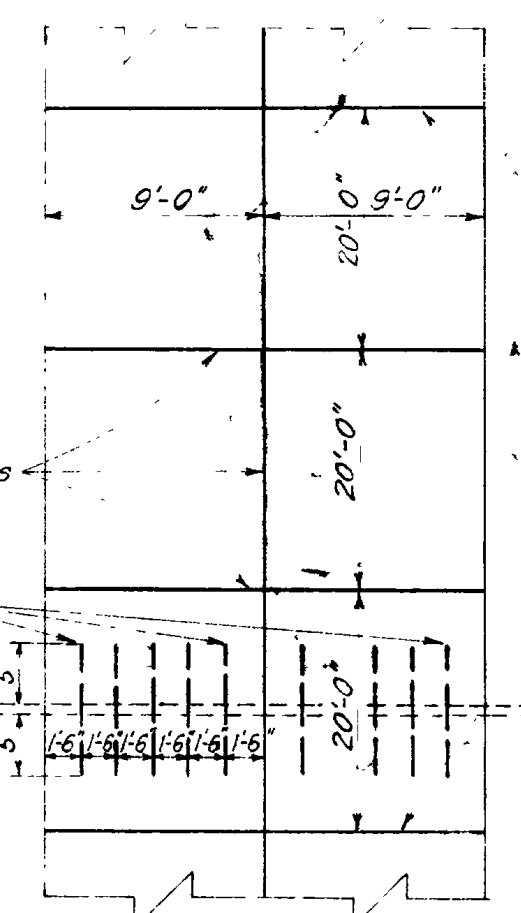


CROSS SECTION
SCALE 1"=2'



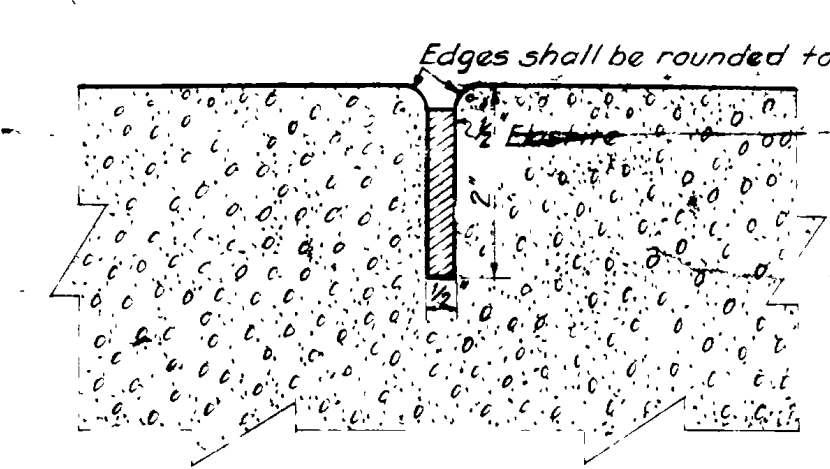
3/8" Joints
Pre-moulded Joint Filler Constructed to Conform to Template

TO BE USED BETWEEN
STA: [] & STA: []



3/4" Deformed Steel Bars shall be placed over all Culverts at a depth of 3" from top of pavement, and of sufficient length so that the Bar will extend at least 5' each side of the Culvert. No Contraction Joints shall be placed over Bars.

TO BE USED BETWEEN
STA: [] & STA: []



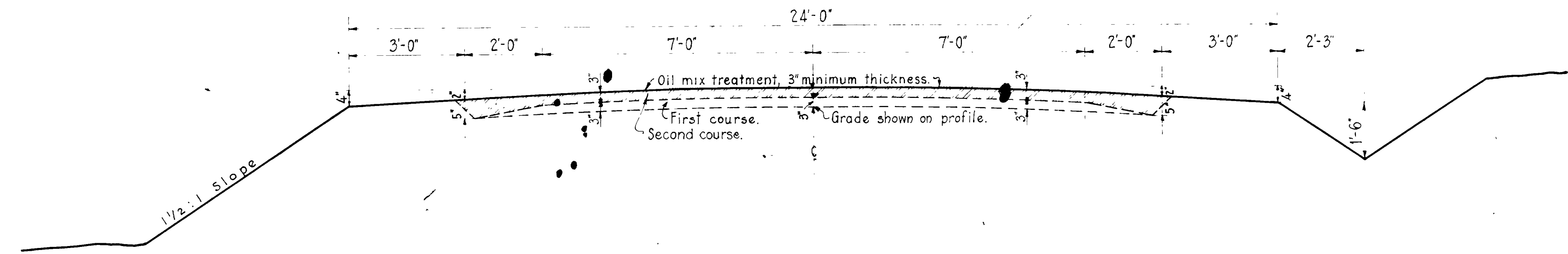
DETAILS OF DUMMY JOINT

USED ON	
F A P N'S	
40-B	
40-A RESURFACED SECTION	
84	
72-B	
107-D	
107-C	
(S.R.) 703-D	
(S.R.) 430-C	
86-A	
42-A RE-OP'D	
65-D	
S.P. 249	
S.P. 260	

REG. ROAD DIST. NO.	STATE	FISCAL YEAR	SHEET NO.	TOTAL SHEETS
12	UTAH			

STANDARD TYPICAL CROSS SECTION

TYPE 'N' OILING
SCALE 1"=2'-0"

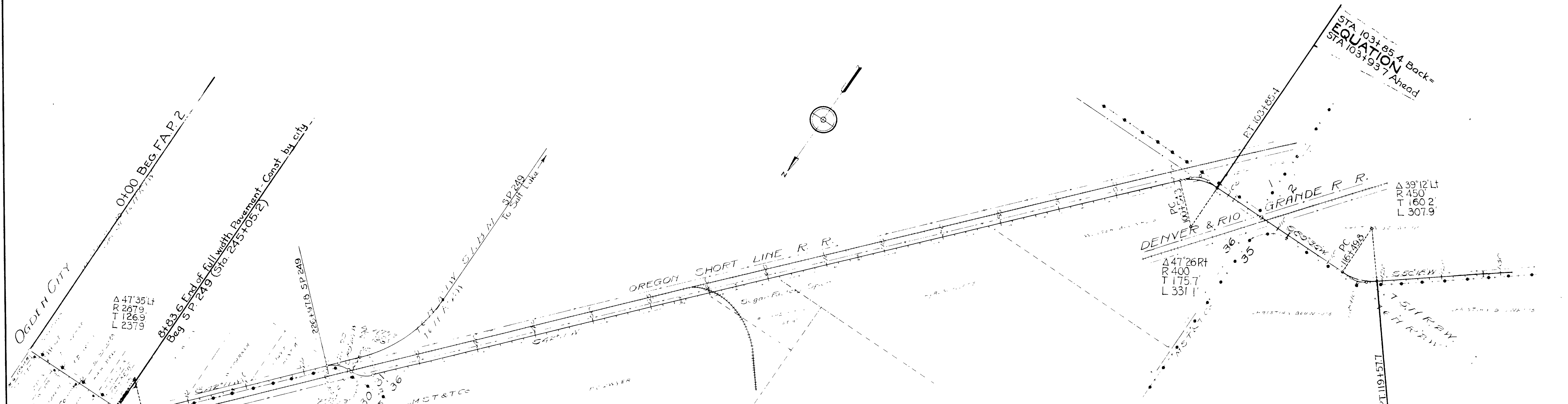


To be used between sta. [] & sta. []

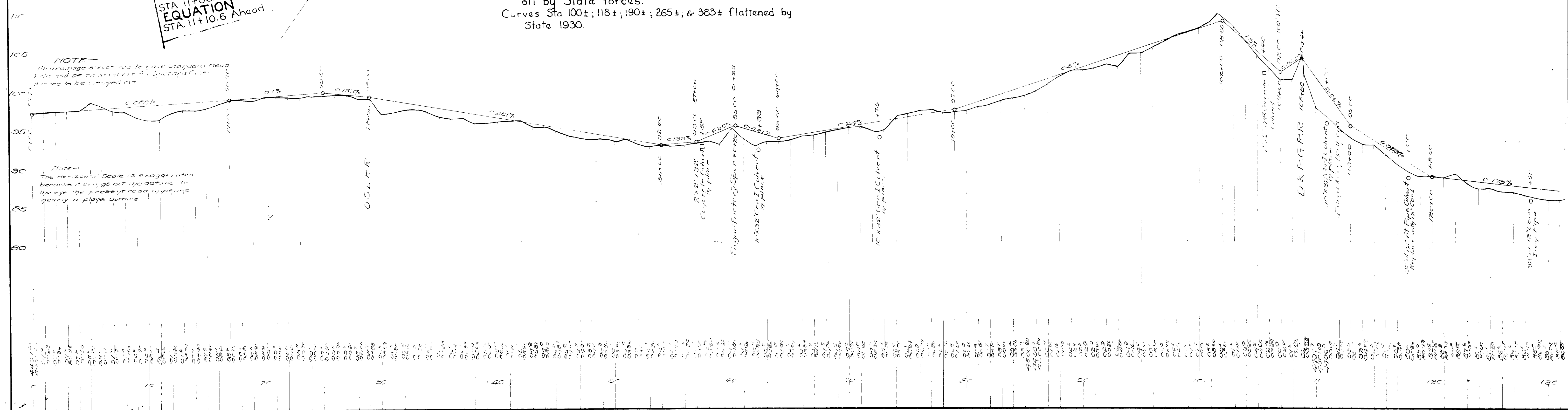
REVISIONS	
NO.	DATE
1	3-22-27

Used On N.R.P. No.	USED ON F.A.P. No.	USED ON F.A.P. No.	USED ON F.A.P. No.	USED ON F.A.P. No.	UTAH STATE ROAD COMMISSION SALT LAKE CITY, UTAH H. S. KERR, CHIEF ENGINEER
N.R.S. 139	67				DESIGNED BY: E.C.K. DRAWN BY: H.S.T. CHECKED BY: W.L.A. EXAMINED BY: SCALE: 1"=2'-0" ISSUED: APPROVED: DRAWN: 12 13, 1928.
N.R.S. 146	62-A				
	63-A				
	47-B-Re-op.				
	70-A				

FED ROAD DIST. NO.	STATE	FED AID PROJ. NO.	FISCAL YEAR	SHEET NO.	TOTAL SHEETS
2	UTAH	2	1917	3	6



NOTE
 Sta 0+00 to 8+83.6 Paved full width by City.
 Sta 8+83.6 to 26+92 Reconstructed by State 1930-
 18" PC Concrete Pavement as S.P. 249
 Sta. 26+92 to 492+00 Oil mix gravel surfaced 18'
 width-State 1930-Gravel surface by contract S.P.234-
 oil by State forces.
 Curves Sta 100±; 118±; 190±; 265±; & 383± flattened by
 State 1930.

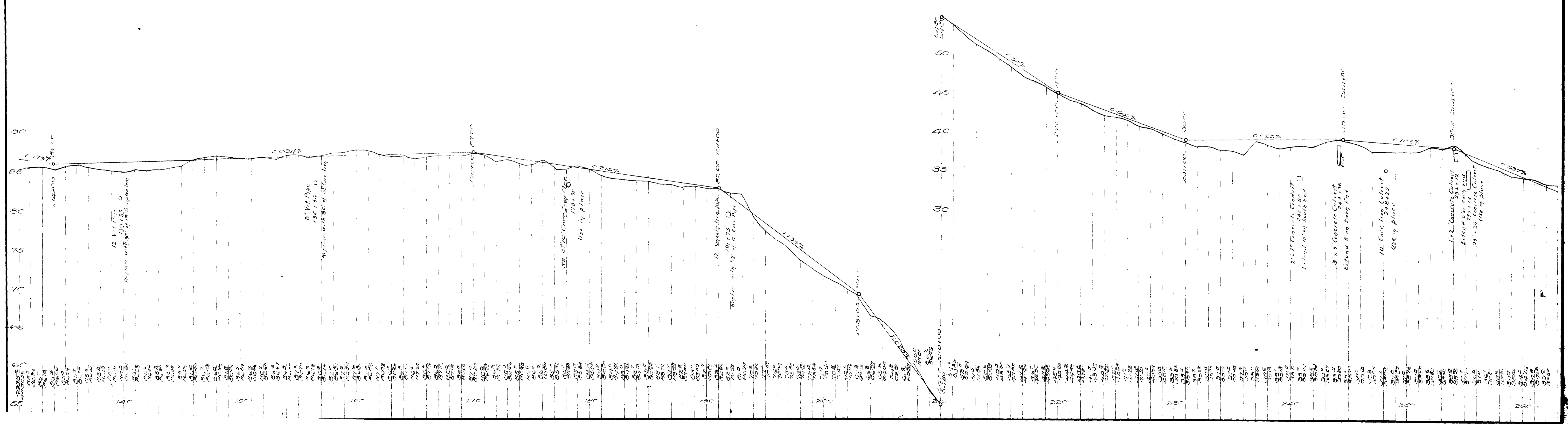
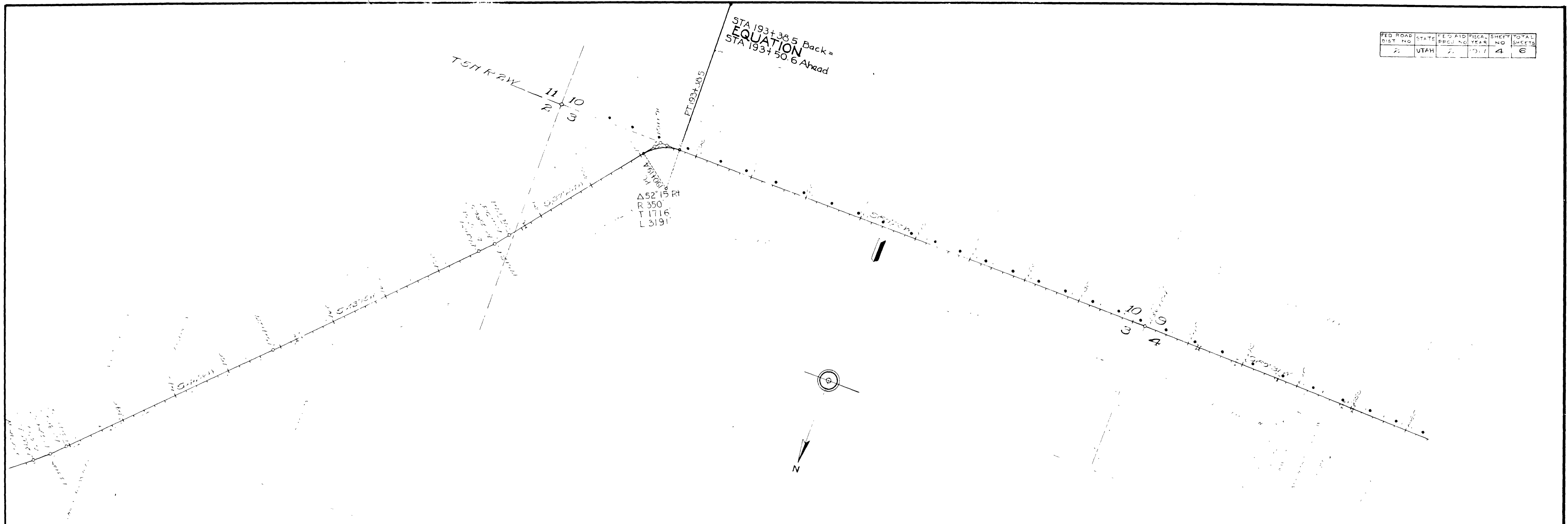


NOTE -
 Drainage structures to have standard head
 and be carried out 5' beyond a clear
 ditches to be cleaned out

Note -
 The horizontal scale is exaggerated
 because it brings out the details. In
 the eye the present road appears
 nearly a plane surface

STA 119+57.7 Back =
EQUATION
 STA 119+63.2 Ahead

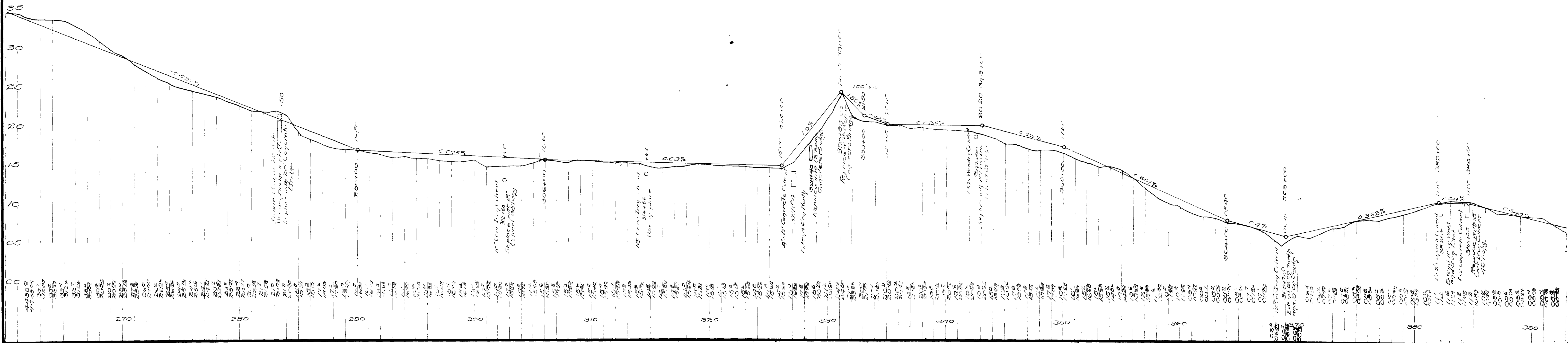
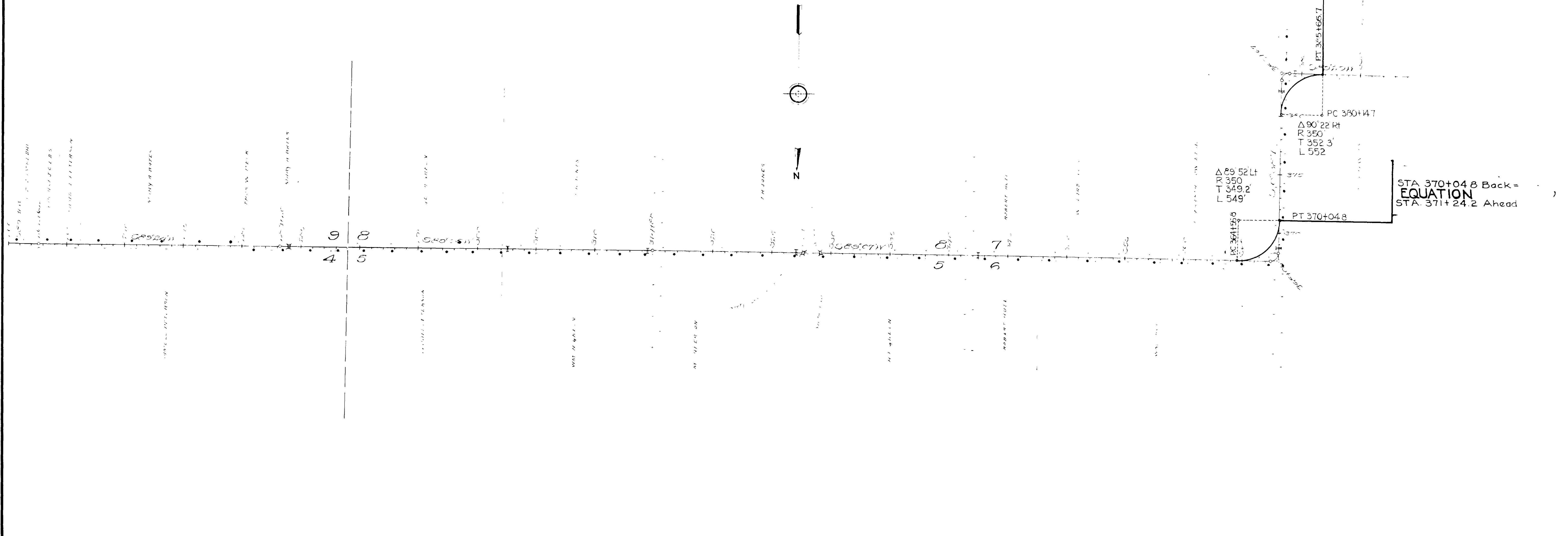
FED. ROAD DIST. NO.	STATE	FED. AID PROJ. NO.	FISCAL YEAR	SHEET NO.	TOTAL SHEETS
2	UTAH	7	51	4	6



PT. BLK.	LIST NO.	DATE	FED. AID	PROJ. NO.	YEAR	SHEET NO.	TOTAL SHEETS
2	UTA	2			1971	5	6

STA 385+66.7 Back =
EQUATION
 STA 386+89.3 Ahead

STA 370+04.8 Back =
EQUATION
 STA 371+24.2 Ahead



FED. CAD. DIST. NO.	STATE	FED. AID PROJ. NO.	FISCAL YEAR	SHEET NO.	TOTAL SHEETS
2	UTAH	2	1977	6	6

